

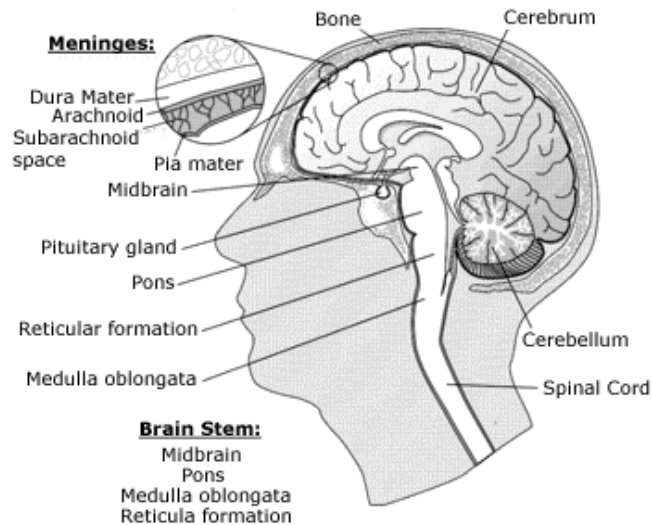
PAIN & DISABILITYSM

Call Today 201-656-4324

191 Doctors, 191 Palisade Ave.
Jersey City, NJ 07306-1112

Cancer Surgery

Pain and Disability Cancer



Brain Tumors

- Treatment
- Biopsy
- Surgery
- Physical medicine and rehabilitation
- Radiotherapy
- Chemotherapy

Diagnostic Aids to Detect Brain Tumors

- Computer Axial Tomography Scan (CT or CAT Scan)
- Magnetic resonance imaging (also called MRI or NMR)
- Skull X-ray
- Chest X-ray
- Positron emission tomography (PET) scan
- Angiogram (also called an arteriogram)
- Electroencephalogram (EEG)
- Biopsy

Children's Cancer

- Staff involved in the care of your child
 - General practitioner
 - Pediatric oncologist
 - Ward doctor
 - Nurse
 - Surgeon
 - Haematologist
 - Radiotherapist
 - Radiologist
 - Social worker

- Psychologist
- Dietician
- Pharmacist
- Recreational therapist
- Pathologist
- Hospital and ward life
- Treatment
 - Surgery
 - Radiotherapy
 - Chemotherapy
 - Bone marrow and peripheral stem cell transplant
- Side effects of treatment
 - Bone marrow suppression (low blood count)
 - Risk of infection
 - Hair loss
 - Loss of appetite and weight
 - Drowsiness
- Long term side effects
 - Effect on puberty and fertility - may be affected
 - Effect on growth and development
 - Heart and lungs problems
 - Kidney problems
 - Intellectual development and education: Some children, especially children treated for brain tumors, may develop learning difficulties and may require special help at school. The extent of these difficulties will depend upon the age of your child.
 - Second cancer: Some anti-cancer treatments can themselves increase the risk of other cancers. Your child's doctor will be able to discuss any concerns you may have about this in more detail.
- Drugs and their side effects

Brain Cancer Treatment

- Steroid Therapy
- Anticonvulsants
- External Beam Radiotherapy
- Stereotactic Radiotherapy
- Interstitial Radiotherapy
- Chemotherapy

Home